



MODEL: FPX-535 GRAVITY FEED HVLP SPRAY GUN KIT

Operating Instructions, Parts List & Warranty

IMPORTANT! Read carefully before operating this tool.

Failure to operate any power tool properly can result in personal injury and/or property damage!



7.2.2.3 GENERAL SAFETY RULES

- Multiple hazards. Read and understand the safety instructions before installing, operating, repairing, maintaining, changing accessories on, or working near the power tool. Failure to do so can result in serious bodily injury.
- Only qualified and trained operators should install, adjust or use the power tool.
- Do not modify this power tool. Modifications may reduce the effectiveness of safety measures and increase the risks to the operator.
- Do not discard the safety instructions – give them to the operator.
- Do not use a tool if the tool has been damaged.
- Warnings shall be given against the risk of explosion or fire due to the material being processed.
- Warnings shall be given against the risk of cutting.



7.2.2.4 PROJECTILE HAZARDS

- Failure of the work piece, of accessories, or even of the tool itself may generate high velocity projectiles.
- Always wear impact-resistant eye protection during operation of the tool. The grade of protection required should be assessed for each use.



7.2.2.5 ENTANGLEMENT HAZARDS

- Entanglement hazard – choking, scalping and/or lacerations can occur if neck ware, hair or gloves are not kept away from tool and accessories.

7.2.2.6 OPERATING HAZARDS

- Use of the tool may expose the operator's hands to hazards including crushing, impacts, cuts and abrasions and heat. Wear suitable gloves to protect hands.
- Operators and maintenance personnel must be physically able to handle the bulk, weight and power of the tool.
- Hold the tool correctly: be ready to counteract normal or sudden movements – have both hands available.
- Maintain a balanced body position and secure footing.
- Keep hands away from rotating or reciprocation accessories, spindles or other moving parts.
- Release the start and stop device in the case of an interruption of the energy supply
- Use only lubricants recommended by the manufacturer.



7.2.2.7 REPETITIVE MOTIONS HAZARDS

- When using a power tool, you may experience discomfort in your hands, arms, shoulders, neck, or other parts of your body.
- While using a power tool, position your body in a comfortable posture. Maintain secure footing and avoid awkward or off-balanced postures. Changing your posture during extended tasks may help avoid discomfort and fatigue.
- If you experience symptoms such as persistent or recurring discomfort, pain, throbbing, aching, tingling, numbness, burning sensation, or stiffness, do not ignore these warning signs. Promptly tell your employer and consult a qualified health professional.

7.2.2.8 ACCESSORY HAZARDS

- Only use sizes and types of accessories and consumables that are recommended by the power tool manufacturer.



7.2.2.9 WORKPLACE HAZARDS

- Slips, trips and falls are major causes of workplace injury. Be aware of slippery surfaces caused by use of the tool and also of trip hazards caused by the air line or hydraulic hose.
- Proceed with care in unfamiliar surroundings. Hidden hazards may exist, such as electricity or other utility lines.
- This power tool is not intended for use in potentially explosive atmospheres and is not insulated from coming into contact with electric power.
- Make sure there are no electrical cables, gas pipes etc. that could cause a hazard if damaged by use of the tool.



7.2.2.10 DUST AND FUME HAZARDS

- Dust from some work processes can cause cancer, birth defects or other respiratory diseases. Risk assessment of these hazards and implementation of appropriate controls is essential.

- If the pneumatic tool is used in a dust filled environment exhaust air can cause a dust hazard.
- Dusts and fumes generated when using power tools can cause ill health (for example: cancer, birth defects, asthma and/or dermatitis); risk assessment of these hazards and implementation of appropriate controls of is essential.
- Risk assessment should include dust created by the use of the tool and the potential for disturbing existing dust.
- Operate and maintain the power tool as recommended in these instructions, to minimize dust or fume emissions
- Direct the exhaust so as to minimized disturbance of dust in a dust filled environment
- Where dusts or fumes are created, the priority shall be to control them at the point of emission.
- All integral features or accessories for the collection, extraction or suppression of airborne dust or fumes should be correctly used and maintained in accordance with the manufacturer's instructions.
- Select, maintain and replace the consumable/inserted tool as recommended in these instructions, to prevent an unnecessary increase in dust or fumes.
- Use respiratory protection as instructed by your employer or as required by occupational health and safety regulations;



7.2.2.11 NOISE HAZARDS

- Unprotected exposure to high noise levels can cause permanent, disabling, hearing loss and other problems such as tinnitus (ringing, buzzing, whistling or humming in the ears).
- Risk assessment of these hazards and implementation of appropriate controls of is essential.
- Appropriate controls to reduce the risk may include actions such as damping materials to prevent work pieces from 'ringing'
- Use hearing protection as instructed by your employer or as required by occupational health and safety regulations;
- Operate and maintain the power tool as recommended in these instructions, to prevent an unnecessary increase in noise levels;
- Select, maintain and replace the consumable/inserted tool as recommended in these instructions, to prevent an unnecessary increase in noise.



7.2.2.12 VIBRATION HAZARDS

- Exposure to vibration can cause disabling damage to the nerves and blood supply of the hands and arms;
- Wear warm clothing when working in cold conditions and keep your hands warm and dry.
- If you experience numbness, tingling, pain or whitening of the skin in your fingers or hands, stop using the power tool, and tell your employer. You should also seek medical advice from a qualified occupational health professional.
- Operate and maintain the power tool as recommended in these instructions, to prevent an unnecessary increase in vibration;
- Select, maintain and replace the consumable/inserted tool as recommended in these instructions, to prevent an unnecessary increase in vibration levels;
- Support the weight of the tool in a stand, tensioner or balancer, because the operator can then use a lighter grip to support the tool.
- Hold the tool with a light but safe grip taking account of the required hand reaction forces, because the risk from vibration is generally greater when the grip force is higher.


7.2.3 ADDITIONAL SAFETY INSTRUCTIONS FOR PNEUMATIC POWER TOOLS - AIR SUPPLY & CONNECTION HAZARDS

- Air under pressure can cause severe injury.
- Never direct air at yourself or anyone else.
- Whipping hoses can cause severe injury. Always check for damaged or loose hoses and fittings.
- Whenever universal twist couplings (claw couplings) are used, lock pins must be installed.
- Do not exceed the maximum air pressure stated on the tool.
- Use whip check safety cables to safeguard against possible hose to tool and hose to hose connection failure.
- Never carry an air tool by the hose.


Important Warnings

AIR COMPRESSOR AND AIR TOOL SAFETY


- 1. Risk of Bursting. Do not adjust the regulator to result in output pressure greater than the marked maximum pressure of this air tool.
- 2. Ensure the hose is free of obstructions or snags. Entangled or snarled hoses can cause loss of balance or footing and may become damaged.
- 3. Never leave a tool unattended with the air hose attached.
- 4. Do not operate this tool if it does not contain a legible warning label.
- 5. Do not continue to use a tool or hose that leaks air or does not function properly.
- 6. Never direct a jet of compressed air toward people or animals.
- 7. Protect your lungs. Wear a face or dust mask if the operation is dusty.




WARNING: Hearing Protection is Recommended
Hearing protection should be used when the noise level exposure equals or exceeds an 8 hour time-weighted average sound level of 85dBA.




WARNING: Do not use at a pressure greater than the rated maximum pressure of this air tool.



WARNING: Do not attempt to modify this tool or create accessories not recommended for use with this tool. Any such alteration or modification is misuse and could result in a hazardous condition leading to possible serious personal injury.



WARNING: Operating any power tool can result in foreign objects being thrown into your eyes, which can result in severe eye damage. Before beginning operation, always wear safety goggles, safety glasses with side shields, or a full face shield when needed. Always use eye protection marked to comply with ANSI Z87.1.



WARNING: Avoid Prolonged Exposure to Vibration
Pneumatic tools can vibrate during use. Prolonged exposure to vibration or very repetitive hand and arm movements, can cause injury. Stop using any tool if discomfort, tingling feeling or pain occurs. You should consult your physician before resuming use of the tool.



WARNING: THIS PRODUCT CAN EXPOSE YOU TO CHEMICALS, INCLUDING LEAD, WHICH IS KNOWN TO THE STATE OF CALIFORNIA TO CAUSE CANCER AND BIRTH DEFECTS OR OTHER REPRODUCTIVE HARM. For more information go to www.P65Warnings.ca.gov

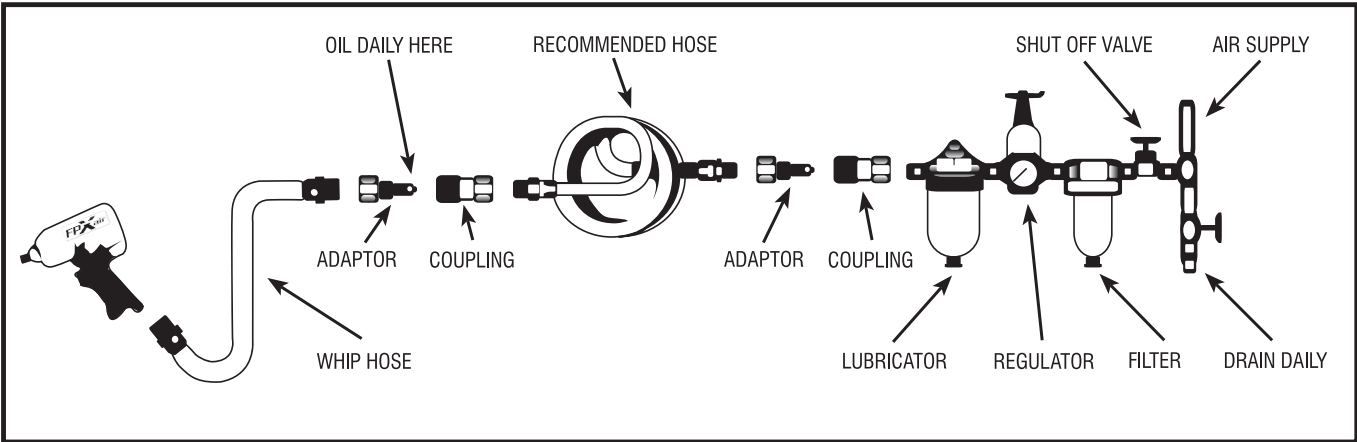
ADVERTENCIA: ESTE PRODUCTO PUEDE EXPONERLO A SUSTANCIAS QUÍMICAS, ENTRE ELLAS PLOMO, QUE EL ESTADO DE CALIFORNIA RECONOCE COMO CAUSANTE DE CANCER, MALFORMACIONES CONGÉNITAS U OTROS DAÑOS AL SISTEMA REPRODUCTOR. Para más información, visita www.P65Warnings.ca.gov

SPECIFICATIONS

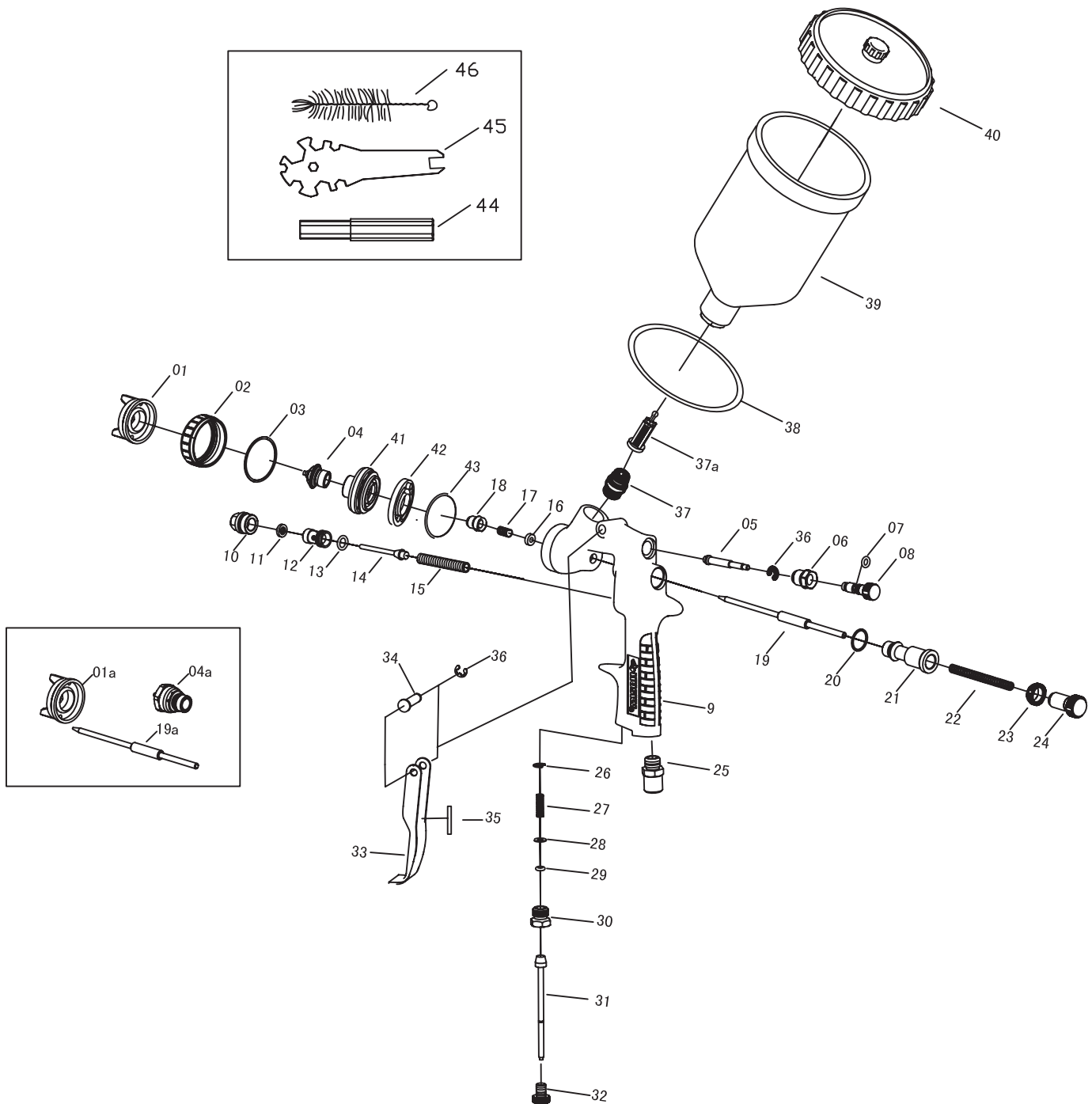
Model	Cup Size (CC)	Spray Pattern (in)	Tip Size (mm)	Weight (lbs)	Length (in)	Maximum Operating Pressure (PSI)	Air Cons. (SCFM)
FPX-535	600	1.2 - 9.2	1.4	1.36	6.25	50	4

Air Supply

Tools of this class operate on a wide range of air pressure. It is recommended that air pressure of these tools measures 90 PSI at the tool while running free. Higher pressure and unclean air will shorten the tool's life because of faster wear and may create a hazardous condition and void the warranty. Water in the air line will cause damage to the tool. Drain the air tank daily. Clean the air inlet filter screen on at least a weekly schedule. The recommended hookup procedure can be viewed in the illustration below. The air inlet, used for connecting air supply, has standard 1/4" NPT American Thread. Line pressure should be increased to compensate for unusually long air hoses (over 25 feet). Minimum hose diameter should be 3/8" I.D. and fittings should have the same inside dimensions.



MODEL: FPX-535 CONVENTIONAL SPRAY GUN KIT Exploded View & Parts List



Reference Number	Part Number	Description
1	9B9802-14	Air Cap 1.4 mm
1a	9B9802-18	Air Cap 1.8 mm
2	9H9801	Air Cap Ring
3	9W9801-2	Gasket
4	9B9803B1-14	Nozzle 1.4 mm
4a	9B9803B1-18	Nozzle 1.8 mm
5	9H98064	Pattern Control Needle
6	9H98063	Pattern Control Nut
7	9H98062	O-Ring
8	9H98065	Pattern Control Knob
9	9H9805	Gun Body
10	9W7131	Air Valve Copper Nut
11	9W7132	Air Valve Packing Ring
12	9W7133	Air Valve Bushing
13	9W7134	O-Ring
14	9W7114	Air Valve Needle
15	9W7115	Air Valve Spring
16	9H98042	Fluid Needle Packing
17	9W98043	Spring
18	9H98041	Fluid Needle Seat
19	9H9809B	Fluid Adj. Needle 1.4 mm
19a	9H9809C	Fluid Adj. Needle 1.8 mm
20	9H98081	Fluid Adj. Gasket
21	9H9808	Fluid Valve Bushing
22	9H9810	Fluid Adj. Spring

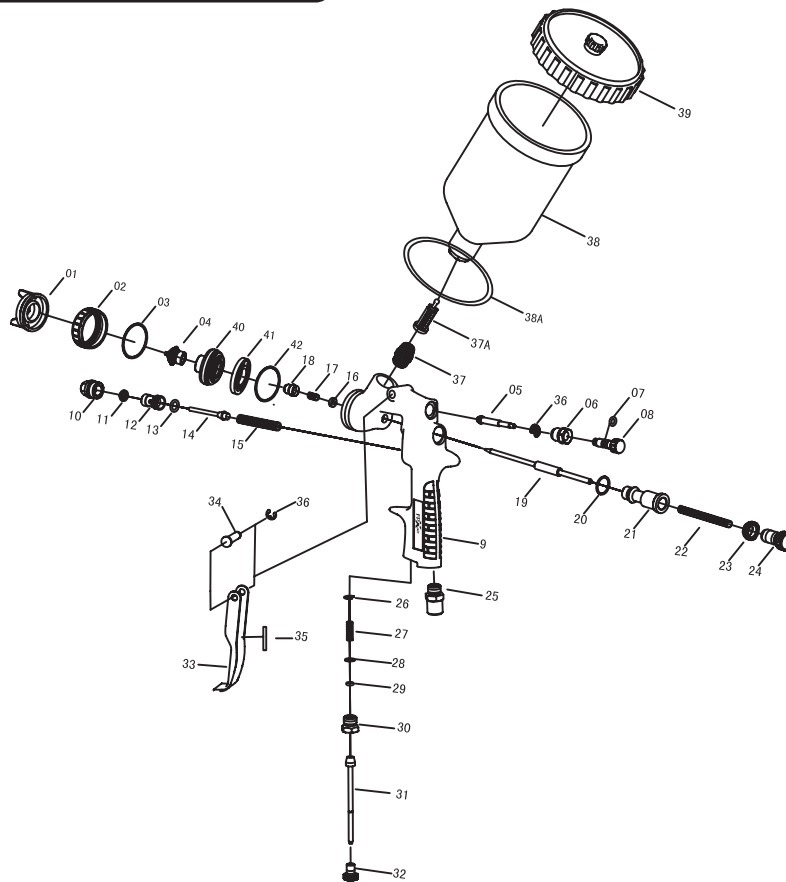
Reference Number	Part Number	Description
23	9H9811	Fluid Adj. Nut
24	9H9812	Fluid Adj. Knob
25	9W7117H	Air Inlet
26	9W71061	Retainer Ring
27	9W71283	Inlet Set Spring
28	9W71282	Washer
29	9W71062	O-Ring
30	9W71286H	Inlet Set Nut
31	9W71282H	Inlet Set Needle
32	9W71287	Inlet Set Knob
33	9H9819	Trigger Lever
34	9H9818	Trigger Pin
35	9H9819-1	Washer
36	9W98061	Retainer Ring (2)
37	9W9821	Paint Inlet Bushing
37a	9W98302-1	Filter
38	9H98301-1	Ornamental Ring
39	9H98301	Gravity Paint Cup
40	9H98305	Cup Lid
41	9B98031	Nozzle Bushing
42	9W98032	Brass Washer
43	9W9801-1	Gasket
44	9W98262	Socket Spanner
45	9B9826	Wrench
46	9W9827	Cleaning Brush



MODEL: FPX-535

GRAVITY FEED HVLP SPRAY GUN KIT

Exploded View & Parts List



Reference Number	Part Number	Description
1	9H9802-14	Air Cap 1.4 mm
2	9H9801FPX	Air Cap Ring
3	9W9801-2	Gasket
4	9B9803B-14	Nozzle 1.4 mm
5	9H98064	Pattern Control Needle
6	9H98063	Pattern Control Nut
7	9H98062	O-Ring
8	9H98065FPX	Pattern Control Knob
9	9H9805	Gun Body
10	9W7131	Air Valve Copper Nut
11	9W7132	Air Valve Packing Ring
12	9W7133	Air Valve Bushing
13	9W7134	O-Ring
14	9W7114	Air Valve Needle
15	9W7115	Air Valve Spring
16	9H98042	Fluid Needle Packing
17	9W98043	Spring
18	9H98041	Fluid Needle Seat
19	9H9809	Fluid Adj. Needle 1.4 mm
20	9H98081	Fluid Adj. Gasket
21	9H9808	Fluid Valve Bushing
22	9H9810	Fluid Adj. Spring

Reference Number	Part Number	Description
23	9H9811	Fluid Adj. Nut
24	9H9812FPX	Fluid Adj. Knob
25	9W7117	Air Inlet
26	9W71061	Retainer Ring
27	9W71283	Inlet Set Spring
28	9W71282	Washer
29	9W71062	O-Ring
30	9W71286	Inlet Set Nut
31	9W71282H	Inlet Set Needle
32	9W71287FPX	Inlet Set Knob
33	9H9819FPX	Trigger Lever
34	9H9818	Trigger Pin
35	9H9819-1	Washer
36	9W98061	Retainer Ring (2)
37	9W9821	Paint Inlet Bushing
37a	9W98302-1	Filter
38	9H98301	Gravity Paint Cup
38a	9H98301-1FPX	Ornamental Ring
39	9H98305FPX	Cup Lid
40	9B98301	Nozzle Bushing
41	9W98302	Brass Washer
42	9W9801-1	Gasket

Maintenance

Other factors outside the tool may cause loss of power or erratic action. Reduced compressor output, excessive drain on the air line, moisture or restriction in air pipes or the use of hose connections of improper size or poor condition may reduce air supply. Grit or gum deposits in the tool may cut power and may be corrected by cleaning the air strainer and flushing out the tool with gum solvent oil or an equal mixture of SAE#10 oil and kerosene. If outside conditions are in order and tool is out-of-warranty, disconnect tool from hose, disassemble tool, replace worn or damaged parts, clean, reassemble, and re-lubricate, or take tool to any air tool service center. For tools in warranty period, send tool direct to Warranty Center.

WARRANTY

Florida Pneumatic Manufacturing Corporation warrants its tools to be free from defects in materials and workmanship for a period of one year. Tools thought to be defective should be returned to the factory, or an authorized service center, transportation charges prepaid, for examination and consequent repair or replacement. This warranty does not cover damage to tools arising from alteration, abuse, or use for other than their intended purpose and does not cover any repairs or replacement made by anyone other than Florida Pneumatic Manufacturing Corporation or its authorized repair stations.



The duration of the Warranty and any other Warranty including, but not limited to, any implied Warranty of merchantability is expressly limited to one year, beginning from the date of the delivery to the original user. The obligation of Florida Pneumatic Manufacturing Corporation under any Warranty, express or implied, is limited solely to the repair or replacement at its factory or authorized repair station of any part which shall prove defective.