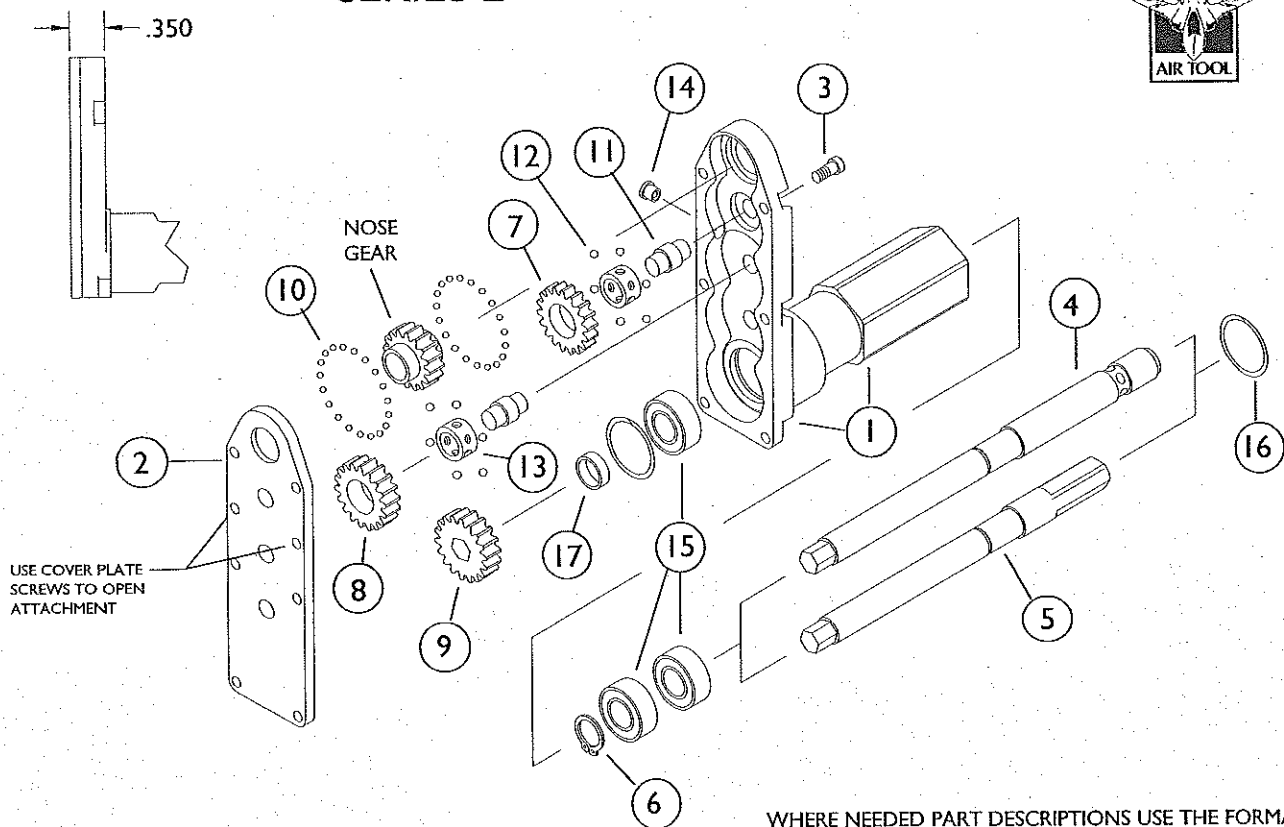


# FAD FLAT ANGLE DRILL SERIES 2



WHERE NEEDED PART DESCRIPTIONS USE THE FORMAT  
DESCRIPTION (COMMA) LOCATION.

## SERIES 2 NOSE GEARS

1/4-28	14772
10-32	14773
9/32-40	14774
5/16-24	14775

## REPAIR TIPS

1) USE A SMALL AMOUNT OF GREASE ON A EXACTO KNIFE TO PICK UP BALLS

2) USE A SMALL AMOUNT OF GREASE ON PARTS TO KEEP BALLS IN PLACE

## SERIES 2 14847 5 GEAR FLAT ANGLE DRILL EXTENDED

ITEM	PART #	QTY	DESCRIPTION
1	14883	1	HOUSING ASSY BARE, INCLUDES: 14793 HOUSING, 14905 TUBE
2	14799	1	COVER PLATE
3	14232	6	SCREW, COVER PLATE
4	14911	1	DRIVE SHAFT, BALL LOCK
5	14910	1	DRIVE SHAFT, CHUCK DRIVE
6	14033	1	SNAP RING, DRIVE SHAFT
7	14227	1	IDLER GEAR, THIN
8	14226	2	IDLER GEAR
9	14225	1	DRIVE GEAR
	SEE CHART	1	NOSE GEAR
10	10004	44	BALLS, NOSE GEAR .0625
11	14953	3	BEARING SHAFT
12	10004	6 PER SHAFT	BALLS, BEARING SHAFT .0625
13	14230	3	BALL CAGE
14	3060	1	GREASE FITTING
15	14030	3	BALL BEARING, TUBE
16	14032	2	SPIROLOX RING, TUBE
17	14231	1	SPACER